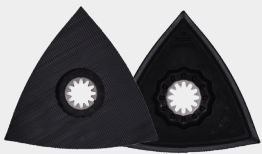
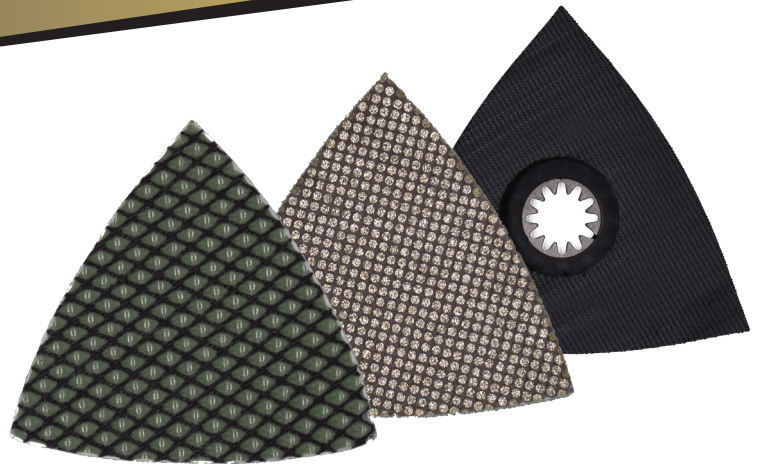




CORNER GRINDING POLISHING PADS

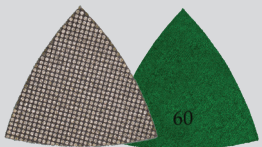
SASE® Corner Grinding & Polishing Pads are ideal for corners and tight, hard to reach areas and are designed to be used with the SASE® Corner Polisher.



SAS.FMM0510

CORNER POLISHING BACKER PAD HOLDER

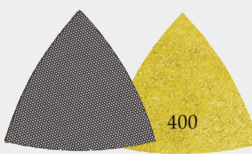
Used to hold corner grinding and polishing pads to corner polisher. Sold in 2-packs.



HOL.502901

CORNER PAD METAL BOND GREEN - 60 GRIT

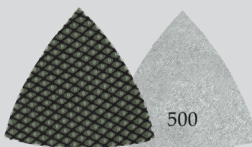
Removes creams and sealers.



HOL.502904

CORNER PAD METAL BOND YELLOW - 400 GRIT

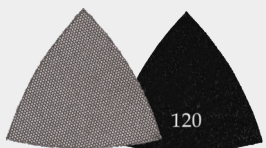
Removes 200 grit metal bond scratches and readies corners for polishing.



HOL.502905

CORNER PAD RESIN BOND WHITE - 500 GRIT

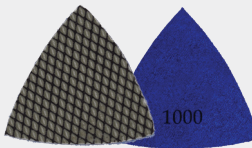
Removes 400 grit metal bond scratches and polishes to a high shine.



HOL.502902

CORNER PAD METAL BOND BLACK - 120 GRIT

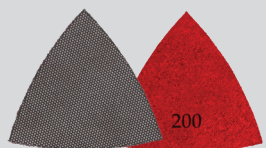
Removes 60 grits metal bond scratches.



HOL.50290

CORNER PAD RESIN BOND BLUE - 1000 GRIT

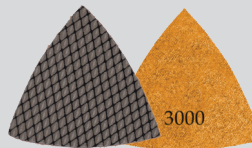
Removes 500 grit resin bond scratches and polishes to a very high shine.



HOL.502903

CORNER PAD METAL BOND RED - 200 GRIT

Removes 120 grit metal bond scratches.



HOL.502907

CORNER PAD RESIN BOND ORANGE - 3000 GRIT

Removes 1000 grit resin bond scratches and polished to the highest shine.